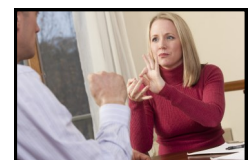
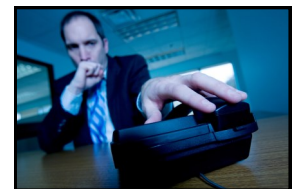


Practice Support

- ◆ **Member-to-Member Connection** - This *free*, statewide service allows PBA members to search for other members by specific areas of practice and geographic locations.
- ◆ **Law Office Management Support** - As a member you can talk with the PBA's Law Practice Management Coordinator for free guidance and resource materials on a wide array of issues ranging from technology concerns to managing the business side of your practice to starting or closing a practice.
- ◆ **Ethics Hotline and Opinions** - Members can receive free advisory opinions based on the current Rules of Professional Conduct by calling the Ethics Hotline and speaking with the PBA ethics counsel. Published ethics opinions are also available in searchable format in the members-only area of the PBA website.
- ◆ **Claims Repair Hotline** - Members covered by the PBA-preferred professional liability insurance program can speak confidentially with a representative who may help them head off or mitigate a potential malpractice claim.
- ◆ **Consumer Legal Education Pamphlets (CLIPS)** - A series of brochures about issues of concern to clients are available for a nominal fee through the PBA Member Service Center at 1-800-932-0311.
- ◆ **Lawyer Referral Services** - The PBA Lawyer Referral Service is available in 45 Pennsylvania counties. Lawyers from those counties register for specific types of cases and are referred on a rotating basis to clients who contact the service for a referral.
- ◆ **Disability Lawyer Referral Service** - The DLRS identifies lawyers statewide who will represent clients with physical or mental disabilities and law firms that are accessible to clients with disabilities.
- ◆ **Exceptional Children Lawyer Referral Service** - Parents can be put in touch with lawyers statewide who are knowledgeable about this specialized area of practice.
- ◆ **Sign-Language Interpreter/CART Fund** - Members who pay for sign language and/or CART interpreters to communicate with clients or potential clients who are deaf or hard of hearing may be reimbursed through this fund.



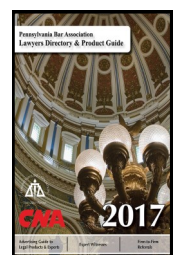
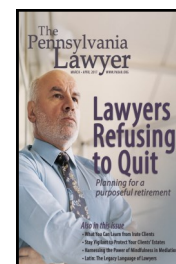
PBA Publications

PBA members have access to award-winning publications and other information resources to stay informed of developments and trends in the law that affect their practices. The following free publications are sent to all members:

- ◆ *The Pennsylvania Lawyer*, bimonthly magazine
- ◆ *The Pennsylvania Bar News*, biweekly newspaper
- ◆ *The Pennsylvania Bar Association Quarterly*, quarterly journal
- ◆ *The PBA e-brief*, biweekly electronic newsletter

Additional publications available to members:

- ◆ *At Issue*, the PBA Young Lawyers Division electronic newsletter
- ◆ Various committee and section newsletters
- ◆ *PBA Lawyers Directory & Product Guide*, contains contact information for more than 60,000 lawyers licensed in Pennsylvania as well as rosters of local, state and federal judges and court personnel, state and federal agencies, and local, state and national bar associations. Available both electronically and in hard copy.



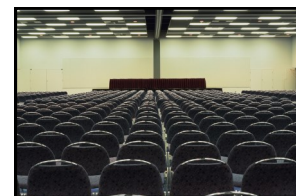
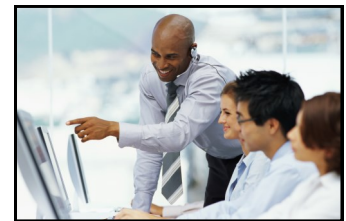
Networking

- ◆ **Committees and Sections** - The PBA's various committees and sections offer members the opportunity to meet and network with other lawyers interested in similar practice areas and actively engage in developing legislation surrounding related legal issues. Members can select from over 40 committees and 18 substantive sections. Committee membership is free, while section memberships require a separate fee. To join a committee or section, sign up by visiting the PBA website at www.pabar.org.
- ◆ **Young Lawyers Division** - The Young Lawyers Division (YLD) provides new lawyers with the tools needed to develop practical, professional and networking opportunities. The YLD sponsors the annual PBA Young Lawyer Summer Summit for members, as well as public service projects such as the Statewide Mock Trial Competition for high school students and the "Wills for Heroes" project.



Education

- ◆ **Continuing Legal Education** - The Pennsylvania Bar Institute, the continuing legal education arm of the PBA, offers CLE courses at a variety of convenient locations statewide at substantial savings. Members receive discount coupons totaling \$200 to attend PBI CLE seminars.
- ◆ **Avoiding Legal Malpractice Seminars** - Seminars on avoiding legal malpractice are held throughout the state to help members recognize and avoid potential malpractice situations. Qualified attendees will receive a discount on their PBA-sponsored professional liability insurance, plus 1.5 hours of CLE ethics credit.
- ◆ **Meetings and Conferences** - A variety of meetings are held throughout the year, with most offering CLE courses. The Annual and Midyear meetings as well as various sections and committee retreats and conferences bring together PBA leadership, county bar leaders, the judiciary and members in an educational yet relaxed atmosphere.



Advocacy

- ◆ **Legislative Initiatives** - Keeping members informed about what is happening in the state Legislature is one of the PBA's primary activities. The PBA Legislative Department works closely with Pennsylvania's Legislature, representing the views of the PBA and its members on new and revised legislation. Legislative activity is carefully monitored by PBA staff and reported to the membership.
- ◆ **PABAR-PAC** - The PABAR-PAC, the association's political action committee, makes contributions to candidates for legislative offices on behalf of the organized bar. Every dollar given to the PABAR-PAC by PBA members goes directly to this mission. The PBA Legislative Department works closely with the PABAR-PAC Board of Directors to maintain an effective voice in the state Legislature by supporting candidates who vote on issues important to the legal system and profession.

